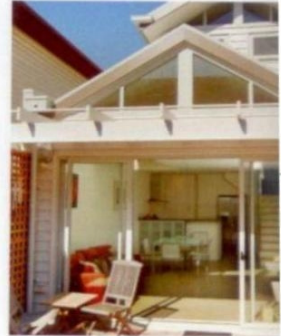


WINNER

BEST RENOVATION/ADDITION \$150,000 - \$300,000



An innovation and refreshing approach from Neumode Design & Construction has transformed this Victorian terrace into a contemporary two bedroom home. The original floor plan was altered to separate the living area from the bedrooms producing a long hall way creating a feeling of freshness with an abundance of light and space. A polished timber staircase with stainless steel balustrading, leads down to the open plan kitchen and family room. Above on the first floor is an open plan study area featuring a cathedral style ceiling allowing sunlight to flood the room. This home is the ultimate inner city villa.

NEUMODE DESIGN &
CONSTRUCTION PTY LTD

CONTACT Michael Hill

PH 9889 4077

ENTRY Richmond

ARCHITECT Metroworks Architects Pty Ltd

DESIGNER Melissa Fleming



Sponsored by

